

Exchange Online Connector Utility

Software Information

INTRODUCTION.....	3
About this document.....	3
 1. OVERVIEW.....	 4
1.1. Background.....	4
1.2. Impact	4
Impact on Email Reception	4
Impact on Email Sending	4
1.3. Measures	5
Measures on Connector Utility v1.0	5
Measures on Connector Utility v1.1	5
 2. FEATURES.....	 6
2.1. User registration/deletion	6
2.2. Server Settings	10
2.3. Server Start/Stop	12
 3. SUPPORT INFORMATION.....	 13
3.1. Supported languages	13
3.2. Supported OS.....	13
3.3. Support Email Address	13
3.4. Support Model (receive email)	14
3.5. Support Model (send email)	14

Introduction

About this document

This document describes Exchange Online Connector Utility.

1. Overview

1.1. Background

Microsoft is moving away from traditional Basic Authentication to the next generation of Modern Authentication. Exchange Online, Microsoft's email service, also moved to Modern Authentication by January 2023. Microsoft is only moving to Modern Authentication in Exchange Online for email reception, and email transmission will remain the same in the future.

It has also been announced that on September 1, 2024, SMTP will transition to advanced authentication, and on September 16, 2024, the use of non-Microsoft email applications will also transition to advanced authentication.

Reference:

- POP3:

<https://techcommunity.microsoft.com/t5/exchange-team-blog/basic-authentication-and-exchange-online-september-2021-update/ba-p/2772210>

- SMTP:

<https://techcommunity.microsoft.com/blog/exchange/exchange-online-to-retire-basic-auth-for-client-submission-smtp-auth/4114750>

- Use of Non-Microsoft Email Applications:

<https://wus.prod.support.services.microsoft.com/en-us/office/modern-authentication-methods-now-needed-to-continue-syncing-outlook-email-in-non-microsoft-email-apps-c5d65390-9676-4763-b41f-d7986499a90d>

1.2. Impact

Impact on Email Reception

Basic Authentication is an authentication method that uses a password. The existing MFP/printer devices described in 3.4 use Basic Authentication to send and receive email. Modern Authentication is an authentication method that uses a standard authorization protocol called OAuth2. The existing MFP/printer devices listed in 3.4 do not support Modern Authentication for sending and receiving email and are currently unable to receive email from Exchange Online. This means that existing MFP/printer devices described in 3.4 will no longer have the ability to print emails and receive iFAX.

Impact on Email Sending

The existing MFP/printer devices listed in section 3.5 do not support advanced authentication for sending emails and currently cannot send emails via Exchange Online. This means that the devices listed in section 3.5 will no longer be able to use the email sending function and the iFAX sending function.

1.3. Measures

Measures on Connector Utility v1.0

For the models listed in section 3.4, we are releasing the Exchange Online Connector Utility to continue receiving email from Exchange Online. The utility is a desktop application that is intended to run permanently on a PC and has a built-in POP3 server. By designating the Utility's built-in POP3 server as the POP3 server from which MFP/printer devices receive email, it proxies Modern Authentication required to receive email from Exchange Online.



Fig. 0-1 Structure of Email Reception

Measures on Connector Utility v1.1

In response to the issues faced by the models listed in sections 3.4 and 3.5, Connector Utility v1.1 has been upgraded to ensure continued email sending capability via Exchange Online. The updated utility includes an embedded SMTP server. By configuring the MFP/printer devices to use this embedded SMTP server as their email sending server, the utility will perform the advanced authentication required by Exchange Online on their behalf. This solution allows the devices to send emails through Exchange Online seamlessly.



Fig. 0-2 Structure of Email Sending

2. Features

When you start the Exchange Online Connector Utility, the following main screen appears. Use the Add and Delete buttons to register and remove users, and the Settings, Start, and Stop buttons to configure, start, and stop the Utility's built-in POP3 server and SMTP Server. Registered users and Mail servers panes display a list of registered users and the operating status of the built-in POP3 server and SMTP server.

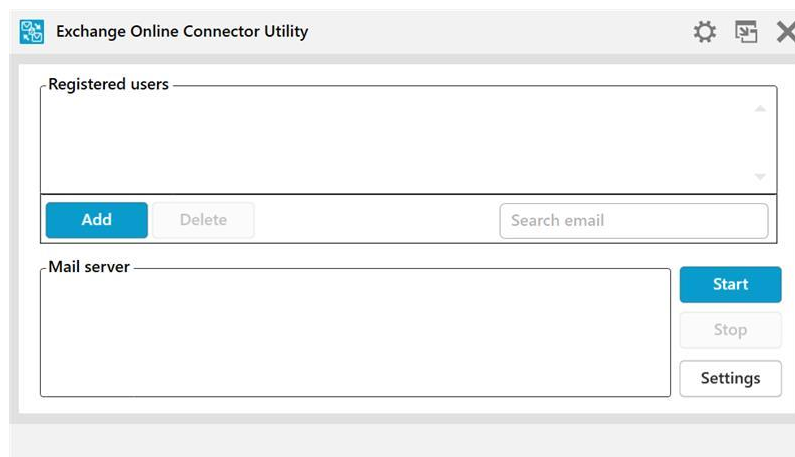


Fig. 0-3 Main Screen

2.1. User registration/deletion

Use the Add and Delete buttons on the main screen to register and remove users. When you press the "Add" button, the PC's standard browser will start, and the Microsoft user authentication screen will appear. Follow the onscreen instructions to authenticate the registered user. The following is an example of a user authentication screen.

1. Enter username

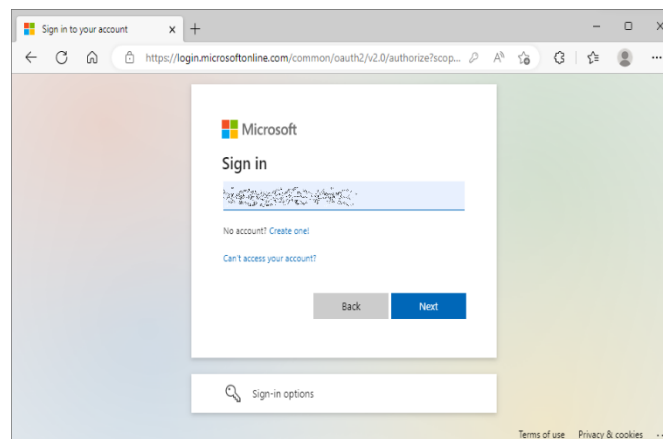


Fig. 0-4 Example of user authentication screen (username entry screen)

2. Enter password

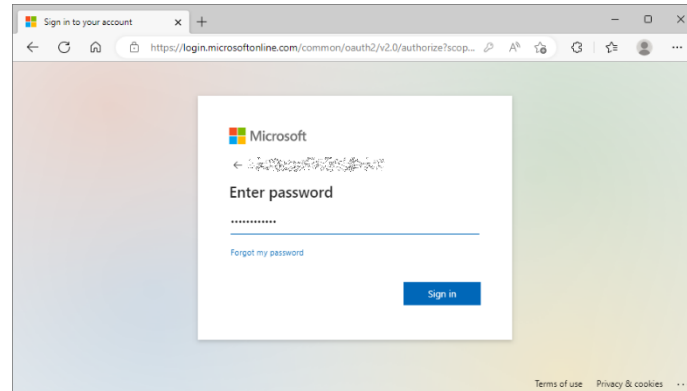


Fig. 0-5 Example of user authentication screen (password entry screen)

3. Accept Request for Authority

Permission requests are only shown for the first time per user. When Administrator logs in, the "Consent on behalf of your organization" checkbox appears. Tick this to skip all subsequent permission requests for all users.

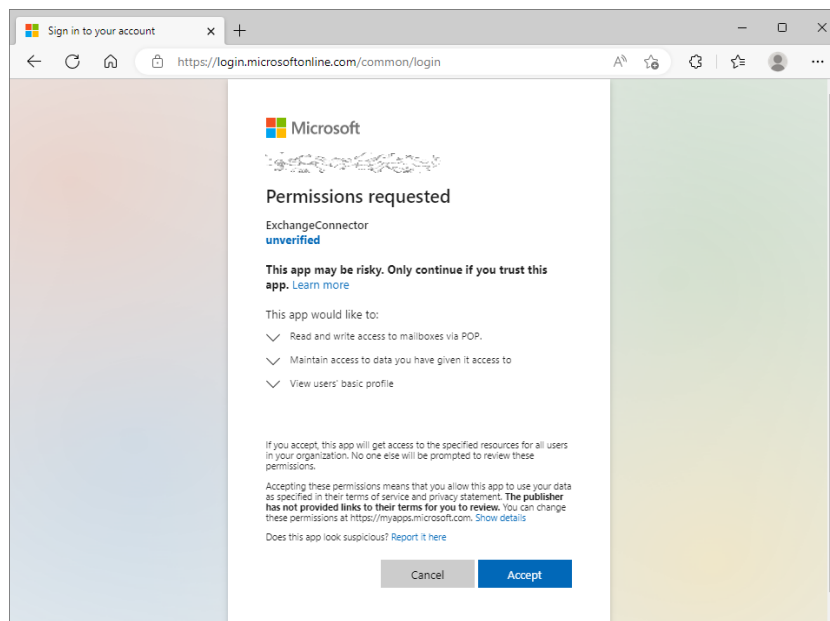


Fig. 0-6 Example of user authentication screen (permission request acceptance screen (when the user first logs in))

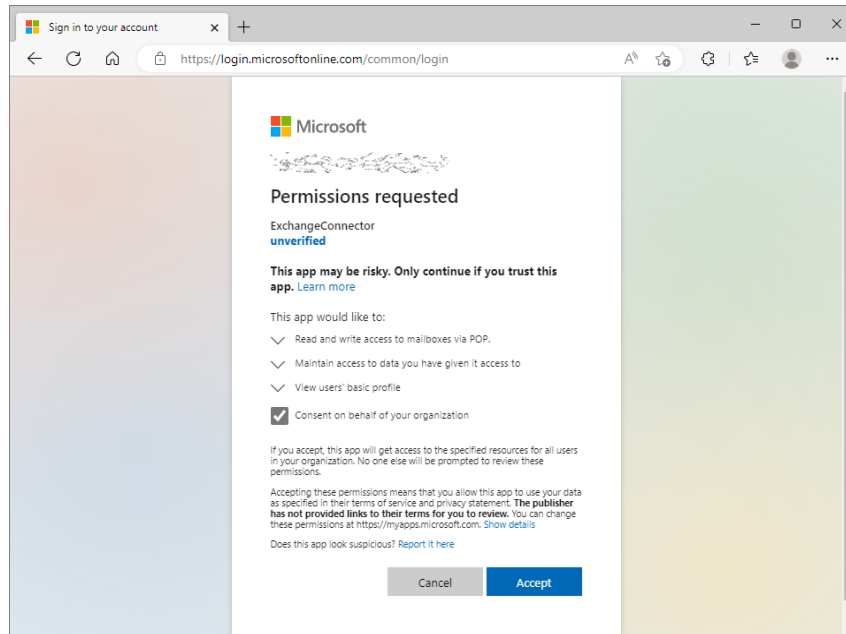


Fig. 0-7 Example of user authentication screen (permission request acceptance screen (Administrator login))

Once user authentication is completed in the PC browser, the utility will display the "Login username" and "Login password" of the registered user. Set this information in the POP3 user settings screen or SMTP User Setting screen of CCRX.

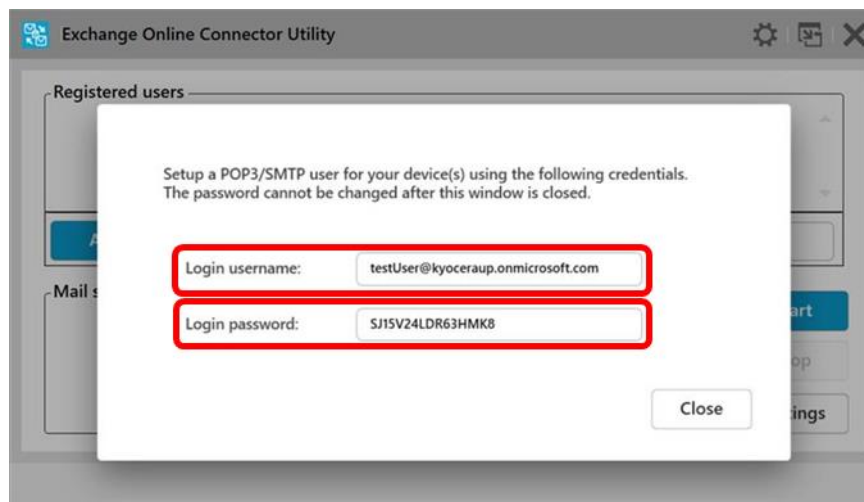


Fig. 0-8 Information displayed after user authentication is complete.

Command Center RX

Model :
Host Name :
Location : English

Admin

Auto-refresh
Last Updated : 2023/03/03 03:18:03

Home
Device Information / Remote Operation
Job Status
Document Box
Address Book
Device Settings
Function Settings
Common/Job Defaults
Copy
Printer
E-mail
Scan to Folder
FAX
Send and Forward
Operation Panel
Network Settings
Security Settings
Management Settings
Links

Function Settings : E-mail

POP3 User Settings

User 1

User Profile 1 : On

E-mail Address :
POP3 Server Name :
POP3 Port Number : 110 (1 - 65535)
POP3 Server Timeout : 10 seconds

Login User Name :
Login Password : *****

Use APOP : Off

POP3 Security : Off

Note :
Make settings here. [Protocol](#)

Connection Test : Test

Delete e-mail after retrieval : On

E-mail Size Limit : 0 KB

Cover Page : Off

Certificate Auto Verification :
☒ Validity Period ☐ Server Identity
☐ Chain ☐ Revocation

Revocation Check Type : OCSP

Hash :
☐ SHA1 ☒ SHA2(256/384)

Back Reset Submit

Fig. 0-9 CCRX POP3 User Settings Screen

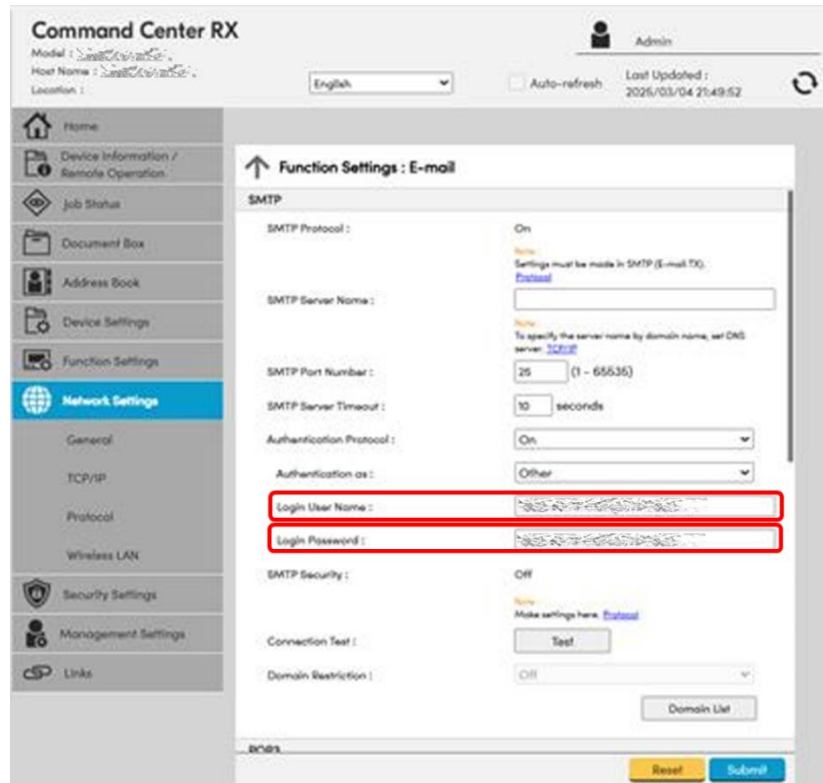


Fig. 0-10 CCRX SMTP User Settings Screen

2.2. Server Settings

Use the "Settings" button on the main screen to configure the built-in POP3 server or SMTP server. Set the IP address at which the server accepts email reception requests or email sending requests from MFP/printer devices to "IP address/Host name". And set the same IP address in the POP3 user settings screen or SMTP user settings screen of CCRX.

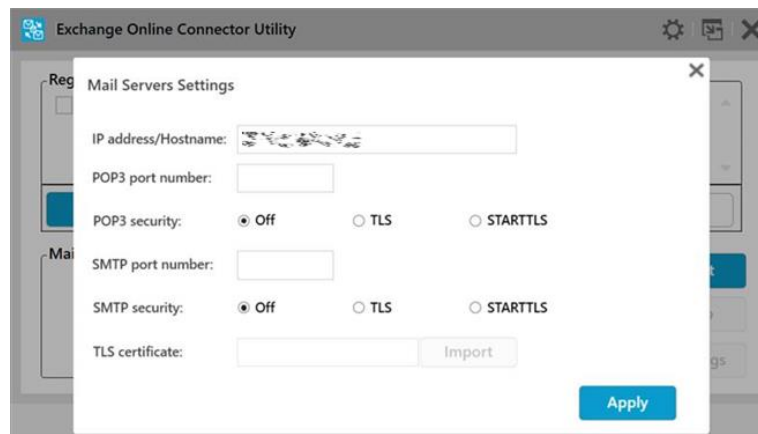


Fig. 0-11 POP3/SMTP User Settings Screen

The screenshot shows the Command Center RX web interface. The top navigation bar includes the title "Command Center RX", a language dropdown set to "English", an "Auto-refresh" checkbox, and a "Last Updated" timestamp of "2023/03/03 03:18:03". The left sidebar contains a menu with options: Home, Device Information / Remote Operation, Job Status, Document Box, Address Book, Device Settings, Function Settings (highlighted), Common/Job Defaults, Copy, Printer, E-mail, Scan to Folder, FAX, Send and Forward, Operation Panel, Network Settings, Security Settings, Management Settings, and Links. The main content area is titled "Function Settings : E-mail" and "POP3 User Settings". Under "User 1", the "User Profile 1" toggle is set to "On". The "E-mail Address" field is populated with a placeholder email. The "POP3 Server Name" field is highlighted with a red rectangle and contains a placeholder server name. Other fields include "POP3 Port Number" (110), "POP3 Server Timeout" (10 seconds), "Login User Name" (placeholder), "Login Password" (masked), "Use APOP" (Off), "POP3 Security" (Off), "Connection Test" (Test button), "Delete e-mail after retrieval" (On), "E-mail Size Limit" (0 KB), "Cover Page" (Off), "Certificate Auto Verification" (Validity Period checked, Chain unchecked), "Revocation Check Type" (OCSP), and "Hash" (SHA1 unchecked, SHA2(256/384) checked). At the bottom, there are "Back", "Reset", and "Submit" buttons.

Fig. 0-12 CCRX POP3 Server Setting

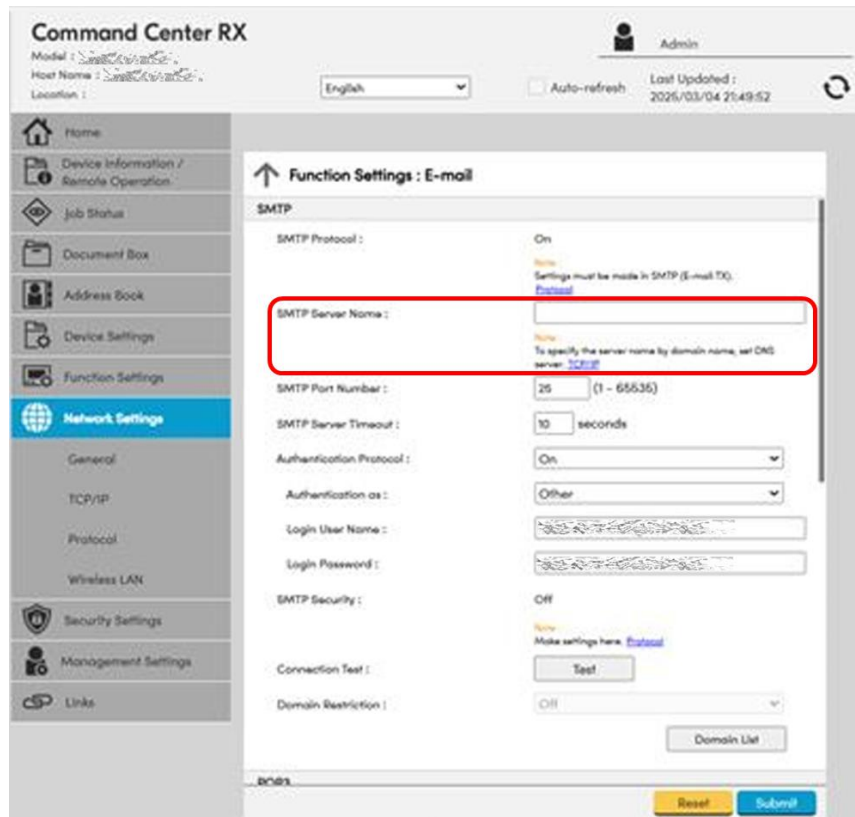


Fig. 0-13 CCRX SMTP Server Setting

2.3. Server Start/Stop

Use the Start and Stop buttons on the main screen to start and stop the built-in POP3 server or SMTP server. While the server is running, the operating status of the server is displayed in Mail Server pane. If the MFP/printer device receives or sends email while the server is running, the utility will perform Modern Authentication required to receive email or send email.

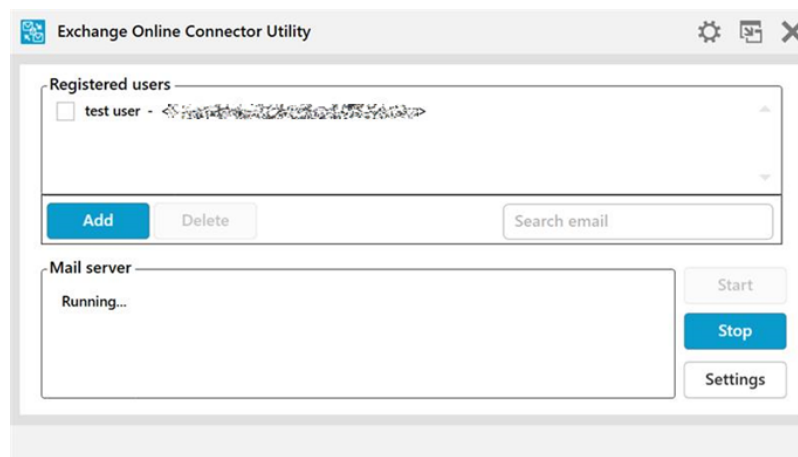


Fig. 0-14 Starting and Stopping POP3 Server Operation Screen

3. Support information

3.1. Supported languages

- English
- German
- French
- Italian
- Spanish
- Dutch
- Portuguese (Brazil)
- Japanese
- Chinese (Simplified)
- Chinese (Traditional)

3.2. Supported OS

- Microsoft Windows® 10
- Microsoft Windows® 11
- Microsoft Windows® Server 2016
- Microsoft Windows® Server 2019
- Microsoft Windows® Server 2022
- Microsoft Windows® Server 2025

3.3. Support Email Address

- Microsoft 365
- Outlook
- Hotmail
- Live.com

3.4. Support Model (receive email)

The supported models are the following models and all models that support email reception produced before them.

Project	TA/UTAX
Polaris Next	P-6039i MFP
	P-5539i MFP
	P-4539i MFP
	P-4532i MFP
	P-4539 MFP
	P-4532 MFP
6thNext	P-6034DN
	P-5534DN
	P-5034DN
	P-4534DN
Virgo	P-C4067i MFP
	P-C4063i MFP
	P-C3567i MFP
	458ci
	P-C3563i MFP
	-
	P-C4063DN
	P-C3563DN
	P458ci

3.5. Support Model (send email)

The supported models are the following models and all models that support email sending produced before them.

Project	TA/UTAX
Iris2024	7009ci
	6009ci
	5009ci
	4009ci
	3509ci
	2509ci
	7059i
	6059i
	5059i
	-
Libra2	P-4027iw MFP
	P-4026w MFP
	-
	P-4021 MFP
	P-3528w MFP

	-
	-
	P-3522 MFP
	P-4021DW
	P-4021DN
	P-3523DW
	-
Sirius2	P-C2656w MFP
	-
	-
	P-C2157w MFP
	-
	-
	-
	P-C2651DW
	-